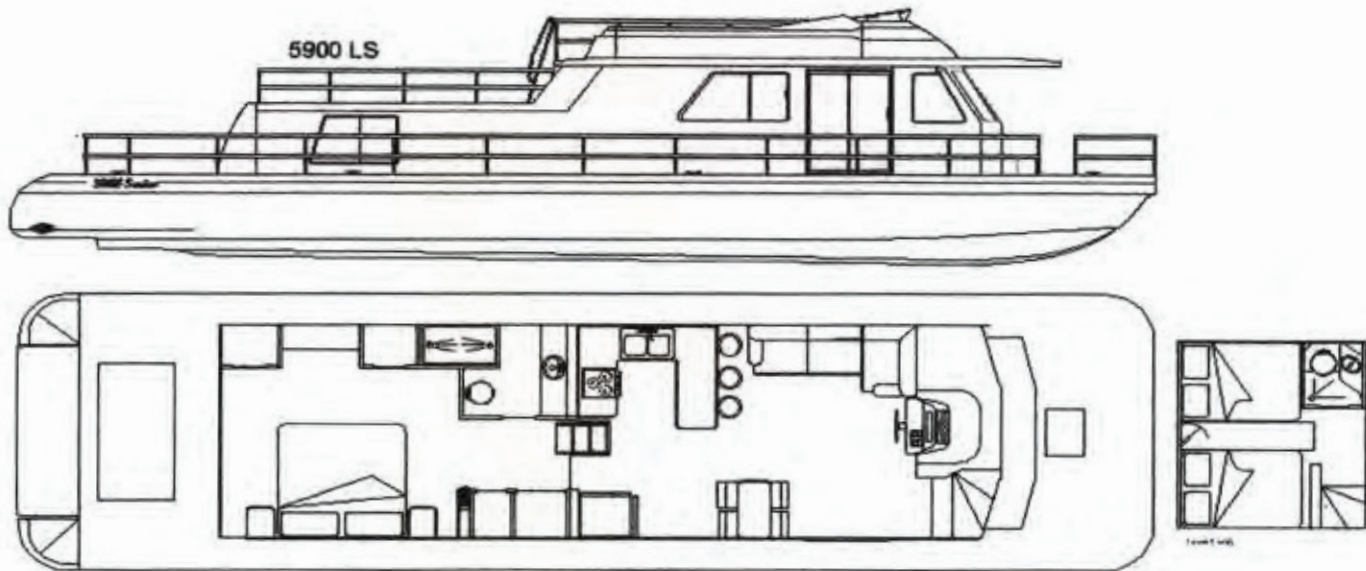


Gibson

2018 MODEL 5900 LS Series



Dimensional Specifications:

Length (Centerline).....	59'0"	17.98 M
Beam (Including Walkways).....	15'9.5"	4.85 M
Hull Depth:		
Forward.....	5'8"	1.77 M
Aft.....	4'3"	1.31 M
Draft.....	2'8"	0.85 M
Walkways.....	1'7"	0.52 M
Cabin Length.....	37'8"	11.52 M
Cabin Width.....	12'4"	3.78 M
Cabin Height.....	6'5"	1.98 M
Deck:		
Forward.....	6'0"	1.83 M
Aft.....	8'11"	2.47 M
Sundeck.....	15'5"	4.72 M
Overall Height (Including Flybridge).....	14'2"	4.33 M
Overall Height (Waterline to Bridge).....	12'4"	3.78 M
Fuel Capacity.....	320 gals.	1211.33 L
Water Capacity.....	150 gals.	567.81 L
Holding Capacity.....	150 gals.	567.81 L
Approximately 31,000 lbs	14061.36 Kg	


Crusader
E N G I N E S

KOHLER

ABYC
Setting Standards for Safer Boating

Design Compliance With NMMA, ABYC and
U.S. Coast Guard Safety Standards

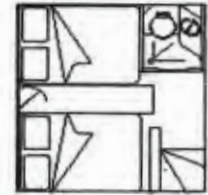
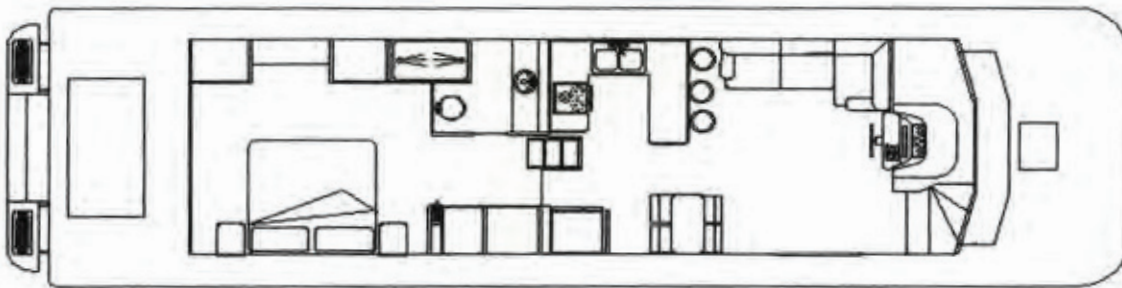
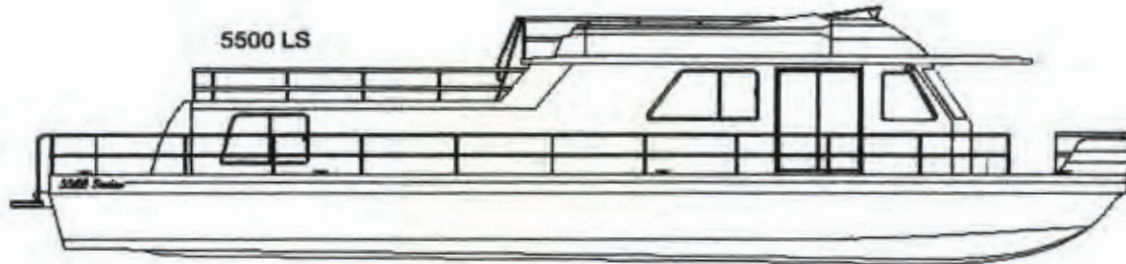
2018 MODEL YEAR

 <h2 style="margin: 0;">5900 LS Series</h2>		605-231-1052 www.gibsonboats.com gibsonboatssd@hotmail.com	Verified before production By: _____ Date: _____
Date: _____		PLEASE REFER TO THIS NO. IN ALL CORRESPONDENCE RELATIVE TO THIS ORDER	
S O L D T O		S H I P T O	
5900 Series - TWIN SCREW/DRIVE V-8 ENGINES			
Optional TWIN SCREW/DRIVE Yanmar 315 Diesel Engines			
STANDARD EQUIPMENT			
16,000 BTU Cruisair (3 Units)		Rudder Indicator System/Dual Station	
Automatic Bilge Pump (2 - Forward & Engine Room)		Safety Chains - Main Deck	
Bath in Lower Stateroom w/Marine Head		Shades/Drapes	
Batteries (3)		Sliding Aft Door	
Battery Charger		Spotlight/Dual Station	
Bilge Blower (4)		Sunbrella Covers	
Captain's Chair Hi/Low		Swim Platform Fiberglass/Metal w/Ladder	
Carbon Monoxide Detector (3 Locations)		Synchronizer System/Dual Station	
Compass		Thermal Pane Windows	
Courtesy Light		Washer/Dryer	
Deluxe Queen Bed - (King Bed available)		Windshield Wiper (1)	
Deluxe Stereo AM/FM CD			
Dual 50-amp Service		OPTIONAL EQUIPMENT	
Engine Hatch Assist Lift		Additional Helm Chair Package	
Extended Cornice w/Halogen Lighting		Helm Chair Pkg w/Vision-Air™ Seats	
Exterior Convenience Lighting		Aft Hard Top	
Extra Fuel Capacity		Bimini for Flybridge - 8ft	
Flooring - Choice of Berber or Plush Pile Carpet		Bimini for Flybridge - 12 ft	
Fire Extinguisher System (f.e. 241)		Bimini for Sundeck - 10 ft	
Flybridge w/Seating		Bimini for Sundeck - 12 ft	
Flybridge Windshield		Central Vacuum System	
Fresh Water Cooling - Salt Water Pack		Custom Drapes	
Generator 13.0 kw - Kohler - Low CO		Engine Mufflers - Centek	
Head - Deluxe Design (1-Aft)		Engine Mufflers - Daper	
Head - Par Electric (1-Fwd)		Flybridge Stereo	
Hour Meter (2)		Flybridge Wetbar	
Hydraulic Steering		Forward Sheer w/Docking Lights, waterproof speakers & stereo control	
Icemaker for Upright Refrigerator		Inverter System - 3100 Watt	
Insulated Walls		Laminate Hardwood Flooring	
Interior - Choice of Dark Maple or Light Maple		Transom Light	
Interior Furniture		Upgrade to AGM Deep Cycle Batteries	
Lower Stateroom with Twin Queen-Size Beds		Water/Holding Tank Indicator	
Microwave/Built-In		Zincs	
Mood Lighting			
Overhead Console			
Phone/TV Installation (1 Location)		COLOR SELECTION:	
Power Monitor (2)		Exterior Trim Stripe:	
Pressurized Hot & Cold Water System		Carpet # Captain's Chair #	
Privacy Door Aft		Hide-A-Bed # Dinette #	
Range Electric w/Oven		L/S Mattress # Headboards #	
Raw Water Strainer - Engine (2)		Bar Stools # Drapes #	
Raw Water Strainer - Generator		Bed Spread # Shades	
Refrigerator		Bimini Sunbrella	
*Optional Equipment & Accessories—Prices Apply Only When Included in Original Order—Prices Subject to Change Without Notice		THIS ORDER IS SUBJECT TO AVAILABILITY AND FINAL APPROVAL BY GIBSON BOATS, LLC, PORTLAND, TN. AN ACKNOWLEDGEMENT WILL BE SENT	
Please Advise Promptly if Incorrect		Dealer Signature	

Gibson

2018 MODEL

5500 LS Series



Dimensional Specifications:

		Metric
Length (Centerline).....	55'10"	16.79 M
Beam (Including Walkways).....	15'9.5"	4.85 M
Hull Depth:		
Forward.....	5'8"	1.77 M
Aft.....	4'3"	1.31 M
Draft.....	2'8"	0.85 M
Walkways.....	1'7"	0.52 M
Cabin Length.....	37'8"	11.52 M
Cabin Width.....	12'4"	3.78 M
Cabin Height.....	6'5"	1.98 M
Deck:		
Forward.....	6'0"	1.83 M
Aft.....	8'11"	2.47 M
Sundeck.....	15'5"	4.72 M
Overall Height (Including Flybridge).....	14'2"	4.33 M
Overall Height (Waterline to Bridge).....	12'4"	3.78 M
Fuel Capacity.....	320 gals.	1211.33 L
Water Capacity.....	150 gals.	567.81 L
Holding Capacity.....	150 gals.	567.81 L
Approximately 30,750 lbs	13947.97 Kg	



Design Compliance With NMMA, ABYC and
U.S. Coast Guard Safety Standards

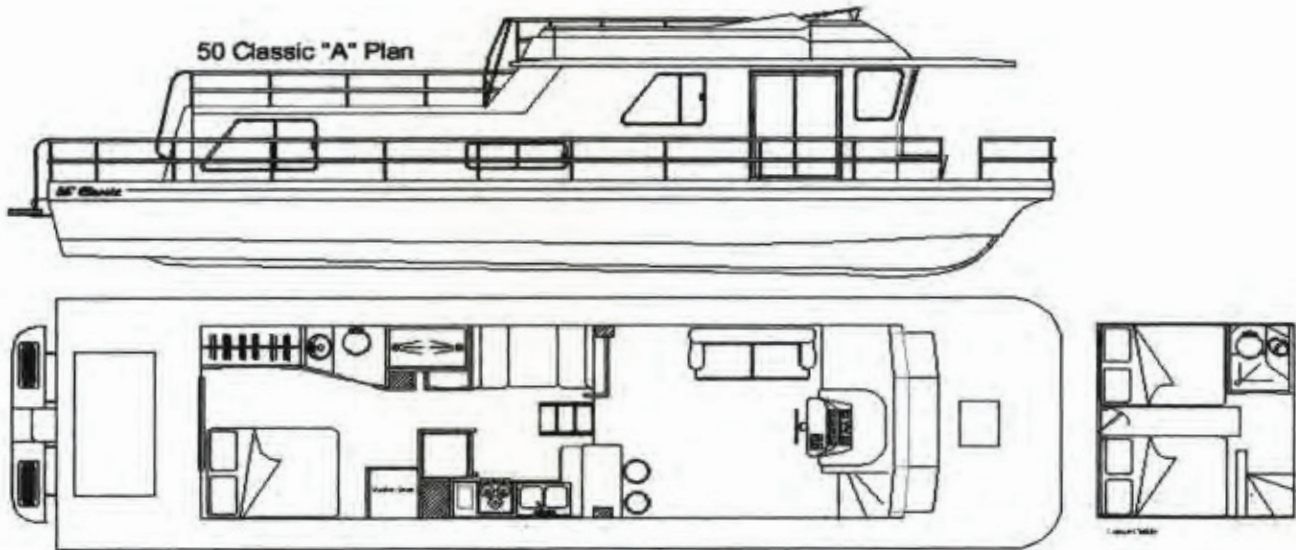
2018 MODEL YEAR

 <h2 style="margin: 0;">5500 LS Series</h2>		605-231-1052 www.gibsonboats.com gibsonboatssd@hotmail.com	Verified before production By: _____ Date: _____
Date: _____		PLEASE REFER TO THIS NO. IN ALL CORRESPONDENCE RELATIVE TO THIS ORDER	
S O L D		S H I P	B. P. O. _____
5500 Series - TWIN SCREW/V-DRIVE V-8 ENGINES			
Optional TWIN SCREW/V-DRIVE Yanmar 315 Diesel Engines			
STANDARD EQUIPMENT			
16,000 BTU Cruisair (3 Units)	Rudder Indicator System/Dual Station		
Automatic Bilge Pump (2 - Forward & Engine Room)	Safety Chains - Main Deck		
Bath in Lower Stateroom w/Marine Head	Shades/Drapes		
Batteries (3)	Sliding Aft Door		
Battery Charger	Spotlight/Dual Station		
Bilge Blower (4)	Sunbrella Covers		
Captain's Chair Hi/Low	Swim Platform Fiberglass/Metal w/Ladder		
Carbon Monoxide Detector (3 Locations)	Synchronizer System/Dual Station		
Compass	Thermal Pane Windows		
Courtesy Light	Washer/Dryer		
Deluxe Queen Bed - (King Bed available)	Windshield Wiper (1)		
Deluxe Stereo AM/FM CD			
Dual 50-amp Service	OPTIONAL EQUIPMENT		
Engine Hatch Assist Lift	Additional Helm Chair Package		
Extended Comice w/Halogen Lighting	Helm Chair Pkg w/Vision-Air™ Seats		
Exterior Convenience Lighting	Aft Hard Top		
Extra Fuel Capacity	Bimini for Flybridge - 8ft		
Flooring - Choice of Berber or Plush Pile Carpet	Bimini for Flybridge - 12 ft		
Fire Extinguisher System (f.e. 241)	Bimini for Sundeck - 10 ft		
Flybridge w/Seating	Bimini for Sundeck - 12 ft		
Flybridge Windshield	Central Vacuum System		
Fresh Water Cooling - Salt Water Pack	Custom Drapes		
Generator 13.0 kw - Kohler - Low CO	Engine Mufflers - Centek		
Head - Deluxe Design (1-Aft)	Engine Mufflers - Daper		
Head - Par Electric (1-Fwd)	Flybridge Stereo		
Hour Meter (2)	Flybridge Wetbar		
Hydraulic Steering	Forward Sheer w/Docking Lights, waterproof speakers & stereo control		
Icemaker for Upright Refrigerator	Inverter System - 3100 Watt		
Insulated Walls	Laminate Hardwood Flooring		
Interior - Choice of Dark Maple or Light Maple	Transom Light		
Interior Furniture	Upgrade to AGM Deep Cycle Batteries		
Lower Stateroom with Twin Queen-Size Beds	Water/Holding Tank Indicator		
Microwave/Built-In	Zincs		
Mood Lighting			
Overhead Console			
Phone/TV Installation (1 Location)	COLOR SELECTION:		
Power Monitor (2)	Exterior Trim Stripe:		
Pressurized Hot & Cold Water System	Carpet # Captain's Chair #		
Privacy Door Aft	Hide-A-Bed # Dinette #		
Range Electric w/Oven	L/S Mattress # Headboards #		
Raw Water Strainer - Engine (2)	Bar Stools # Drapes #		
Raw Water Strainer - Generator	Bed Spread # Shades		
Refrigerator	Bimini Sunbrella		
*Optional Equipment & Accessories—Prices Apply Only When Included in Original Order—Prices Subject to Change Without Notice	THIS ORDER IS SUBJECT TO AVAILABILITY AND FINAL APPROVAL BY GIBSON BOATS, LLC, PORTLAND, TN. AN ACKNOWLEDGEMENT WILL BE SENT		
	Please Advise Promptly if Incorrect	Dealer Signature	

Gibson

2018 MODEL

50' Classic



Dimensional Specifications:

Length (Centerline).....	50'0"	15.24 M
Beam (Including Walkways).....	14'0"	4.27 M
Hull Depth:		
Forward.....	4'5"	1.37 M
Aft.....	4'0"	1.22 M
Draft.....	2'4"	.73 M
Walkways.....	1'6"	.49 M
Cabin Length.....	34'0"	10.36 M
Cabin Width.....	11'0"	3.35 M
Cabin Height.....	6'5"	2.01 M
Deck:		
Forward.....	5'8"	1.77 M
Aft.....	7'0"	2.13 M
Sundeck.....	14'0"	4.27 M
Overall Height.....	16'0"	4.88 M
Fuel Capacity.....	240 gals.	908.5 L
Water Capacity.....	120 gals.	454.25 L
Holding Capacity.....	100 gals.	378.54 L
Approximately 23,000 lbs		10432.62 Kg


Crusader
 ENGINES

KOHLER

ABYC
 Setting Standards for Safer Boating

Yacht Certification

Design Compliance With NMMA, ABYC and
 U.S. Coast Guard Safety Standards

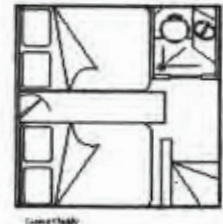
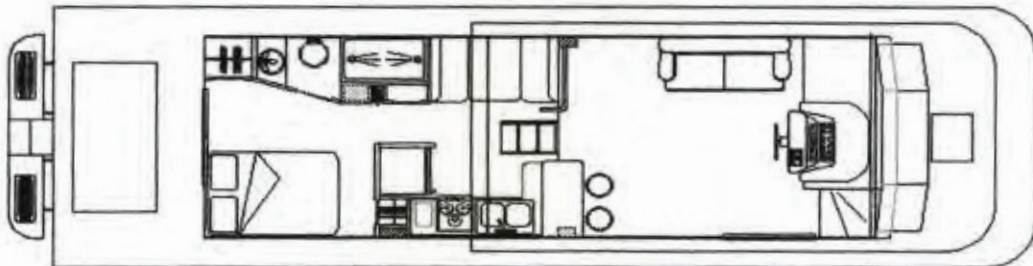
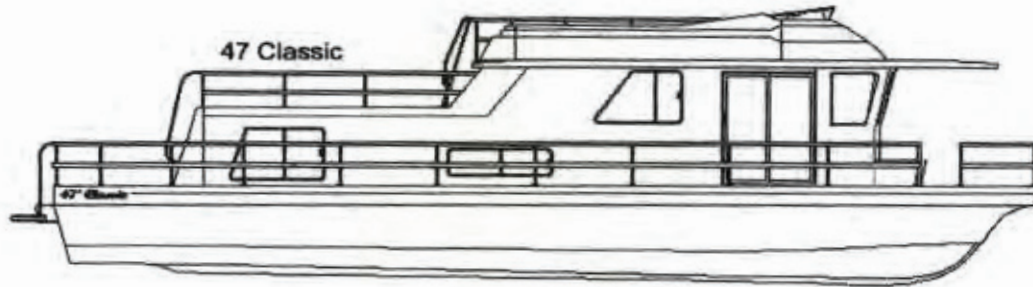
2018 MODEL YEAR

 <h2 style="margin: 0;">50 Classic</h2>		605-231-1052 www.gibsonboats.com gibsonboatssd@hotmail.com	Verified before production By: _____ Date: _____
Date: _____		PLEASE REFER TO THIS NO. IN ALL CORRESPONDENCE RELATIVE TO THIS ORDER	
S O L D	S H I P	B. P. O.	
50' CLASSIC - TWIN SCREW/V-DRIVE V-8 ENGINES			
Optional TWIN SCREW/V-DRIVE Yanmar 315 Diesel Engines			
STANDARD EQUIPMENT			
Air Conditioner - Cruisair Reverse Cycle (2)		Rudder Indicator System/Dual Station	
Automatic Bilge Pump (2 - Forward & Engine Room)		Safety Chains - Main Deck	
Bath in Lower Stateroom w/Marine Head		Shades/Drapes	
Batteries (3)		Sliding Aft Door	
Battery Charger		Spotlight/Dual Station	
Bilge Blower (4)		Sunbrella Covers	
Captain's Chair Hi/Low		Swim Platform Fiberglass/Metal w/Ladder	
Carbon Monoxide Detector (3 Locations)		Synchronizer System/Dual Station	
Compass		Thermal Pane Windows	
Courtesy Light		Washer/Dryer	
Deluxe Queen Bed		Windshield Wiper (1)	
Deluxe Stereo AM/FM CD			
Dual 50-amp Service		OPTIONAL EQUIPMENT	
Engine Hatch Assist Lift			
Extended Cornice w/Halogen Lighting		Additional Helm Chair Package	
Exterior Convenience Lighting		Helm Chair Pkg w/Vision-Air™ Seats	
Extra Fuel Capacity (240 Gal. Total)		Aft Hard Top	
Fire Extinguisher System (f.e. 241)		Bimini for Flybridge - 8ft	
Flooring - Choice of Berber or Plush Pile Carpet		Bimini for Flybridge - 12 ft	
Flybridge w/Seating		Bimini for Sundeck - 10 ft	
Flybridge Windshield		Bimini for Sundeck - 12 ft	
Fresh Water Cooling - Salt Water Pack		Central Vacuum System	
Generator 10.0 kw - Kohler - Low CO		Custom Drapes	
Head - Deluxe Design (1-Aft)		Engine Mufflers - Centek	
Head - Par Electric (1-Fwd)		Engine Mufflers - Daper	
Hour Meter (2)		Flybridge Stereo	
Hydraulic Steering		Flybridge Wetbar	
Icemaker for Upright Refrigerator		Forward Sheer w/Docking Lights, waterproof speakers & stereo control	
Insulated Walls		Inverter System - 3100 Watt	
Interior - Choice of Dark Maple or Light Maple		Laminate Hardwood Flooring	
Interior Furniture		Upgrade to AGM Deep Cycle Batteries	
Lower Stateroom with Twin Full-Size Beds		Water/Holding Tank Indicator	
Microwave/Built-In		Zincs	
Mood Lighting			
Overhead Console			
Phone/TV Installation (1 Location)		COLOR SELECTION:	
Power Monitor (2)		Exterior Trim Stripe:	
Pressurized Hot & Cold Water System		Carpet #	Captain's Chair #
Privacy Door Aft		Hide-A-Bed #	Dinette #
Range Electric w/Oven		L/S Mattress #	Headboards #
Raw Water Strainer - Engine (2)		Bar Stools #	Drapes #
Raw Water Strainer - Generator		Bed Spread #	Shades
Refrigerator		Bimini	Sunbrella
*Optional Equipment & Accessories—Prices Apply Only When Included in Original Order—Prices Subject to Change Without Notice		THIS ORDER IS SUBJECT TO AVAILABILITY AND FINAL APPROVAL BY GIBSON BOATS, LLC, PORTLAND, TN. AN ACKNOWLEDGEMENT WILL BE SENT	
		Please Advise Promptly if Incorrect	Dealer Signature

Gibson

2018 MODEL

47' Classic



Dimensional Specifications:

Length (Centerline).....	47'0"	14.33 M
Beam (Including Walkways).....	14'0"	4.27 M
Hull Depth:		
Forward.....	4'5"	1.37 M
Aft.....	4'0"	1.22 M
Draft.....	2'4"	.73 M
Walkways.....	1'6"	.49 M
Cabin Length.....	32'0"	9.75 M
Cabin Width.....	11'0"	3.35 M
Cabin Height.....	6'5"	2.01 M
Deck:		
Forward.....	5'8"	1.77 M
Aft.....	7'0"	2.13 M
Sundeck.....	13'0"	3.96 M
Overall Height.....	16'0"	4.88 M
Fuel Capacity.....	240 gals.	908.5 L
Water Capacity.....	100 gals.	378.54 L
Holding Capacity.....	100 gals.	378.54 L
Approximately 21,600 lbs		9797.60 Kg


Crusader
 ENGINES

KOHLER

ABYC
 Setting Standards for Safer Boating

Yacht Certification

Design Compliance With NMMA, ABYC and
 U.S. Coast Guard Safety Standards

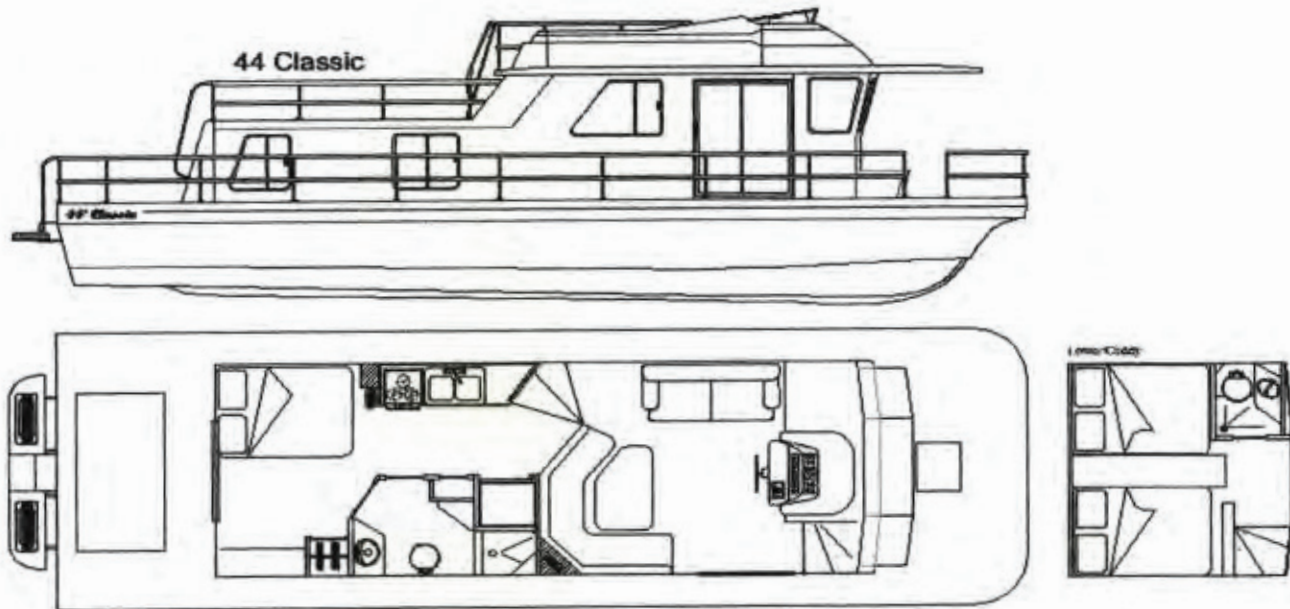
2018 MODEL YEAR

 47 Classic		605-231-1052 www.gibsonboats.com gibsonboatsd@hotmail.com	Verified before production By: _____ Date: _____
Date:		PLEASE REFER TO THIS NO. IN ALL CORRESPONDENCE RELATIVE TO THIS ORDER	
B. P. O.			
B O L D T O		S H I P T O	
47' CLASSIC - TWIN SCREW/V-DRIVE V-8 ENGINES			
Optional TWIN SCREW/V-DRIVE Yanmar 315 Diesel Engines			
STANDARD EQUIPMENT			
Air Conditioner - Cruisair Reverse Cycle (2)		Rudder Indicator System/Dual Station	
Automatic Bilge Pump (2 - Forward & Engine Room)		Safety Chains - Main Deck	
Bath in Lower Stateroom w/Marine Head		Sliding Aft Door	
Batteries (3)		Shades/Drapes	
Battery Charger		Spotlight/Dual Station	
Bilge Blower (4)		Sunbrella Covers	
Captain's Chair Hi/Low		Swim Platform Fiberglass/Metal w/Ladder	
Carbon Monoxide Detector (3 Locations)		Synchronizer System/Dual Station	
Compass		Thermal Pane Windows	
Courtesy Light		Windshield Wiper (1)	
Deluxe Queen Bed			
Deluxe Stereo AM/FM CD		OPTIONAL EQUIPMENT	
Dual 50-amp Service			
Engine Hatch Assist Lift		Additional Helm Chair Package	
Extended Cornice w/Halogen Lighting		Helm Chair Pkg w/Vision-Air™ Seats	
Exterior Convenience Lighting		Aft Hard Top	
Extra Fuel Capacity (240 Gal. Total)		Bimini for Flybridge - 8ft	
Fire Extinguisher System (f.e. 241)		Bimini for Flybridge - 12 ft	
Flooring - Choice of Berber or Plush Pile Carpet		Bimini for Sundeck - 10 ft	
Flybridge w/Seating		Bimini for Sundeck - 12 ft	
Flybridge Windshield		Central Vacuum System	
Fresh Water Cooling - Salt Water Pack		Custom Drapes	
Generator 10.0 kw - Kohler - Low CO		Engine Mufflers - Centek	
Head - Deluxe Design (1-Aft)		Engine Mufflers - Daper	
Head - Par Electric (1-Fwd)		Flybridge Stereo	
Hour Meter (2)		Flybridge Wetbar	
Hydraulic Steering		Forward Sheer w/Docking Lights, waterproof speakers & stereo control	
Icemaker for Upright Refrigerator		Inverter System - 3100 Watt	
Insulated Walls		Laminate Hardwood Flooring	
Interior - Choice of Dark Maple or Light Maple		Upgrade to AGM Deep Cycle Batteries	
Interior Furniture		Water/Holding Tank Indicator	
Lower Stateroom with Twin Full-Size Beds		Zincs	
Microwave/Built-In			
Mood Lighting			
Overhead Console			
Phone/TV Installation (1 Location)		COLOR SELECTION:	
Power Monitor (2)		Exterior Trim Stripe:	
Pressurized Hot & Cold Water System		Carpet #	Captain's Chair #
Privacy Door Aft		Hide-A-Bed #	Dinette #
Range Electric w/Oven		L/S Mattress #	Headboards #
Raw Water Strainer - Engine (2)		Bar Stools #	Drapes #
Raw Water Strainer - Generator		Bed Spread #	Shades
Refrigerator		Bimini	Sunbrella
*Optional Equipment & Accessories—Prices Apply Only When Included in Original Order—Prices Subject to Change Without Notice		THIS ORDER IS SUBJECT TO AVAILABILITY AND FINAL APPROVAL BY GIBSON BOATS, LLC, PORTLAND, TN. AN ACKNOWLEDGEMENT WILL BE SENT	
		Please Advise Promptly if Incorrect	Dealer Signature

Gibson

2018 MODEL

44' Classic



Dimensional Specifications:

Length (Centerline).....	44'0"	13.41 M
Beam (Including Walkways).....	14'0"	4.27 M
Hull Depth:		
Forward.....	4'5"	1.37 M
Aft.....	4'0"	1.22 M
Draft.....	2'4"	.73 M
Walkways.....	1'6"	.49 M
Cabin Length.....	29'0"	8.84 M
Cabin Width.....	11'0"	3.35 M
Cabin Height.....	6'5"	2.01 M
Deck:		
Forward.....	5'8"	1.77 M
Aft.....	7'0"	2.13 M
Sundeck.....	13'0"	3.96 M
Overall Height.....	16'0"	4.88 M
Fuel Capacity.....	240 gals.	908.5 L
Water Capacity.....	100 gals.	378.54 L
Holding Capacity.....	100 gals.	378.54 L
Approximately 20,000 lbs		9071.85 Kg


Crusader
 ENGINES

KOHLER

ABYC
 Setting Standards for Safer Boating

Yacht Certification

Design Compliance With NMMA, ABYC and
 U.S. Coast Guard Safety Standards

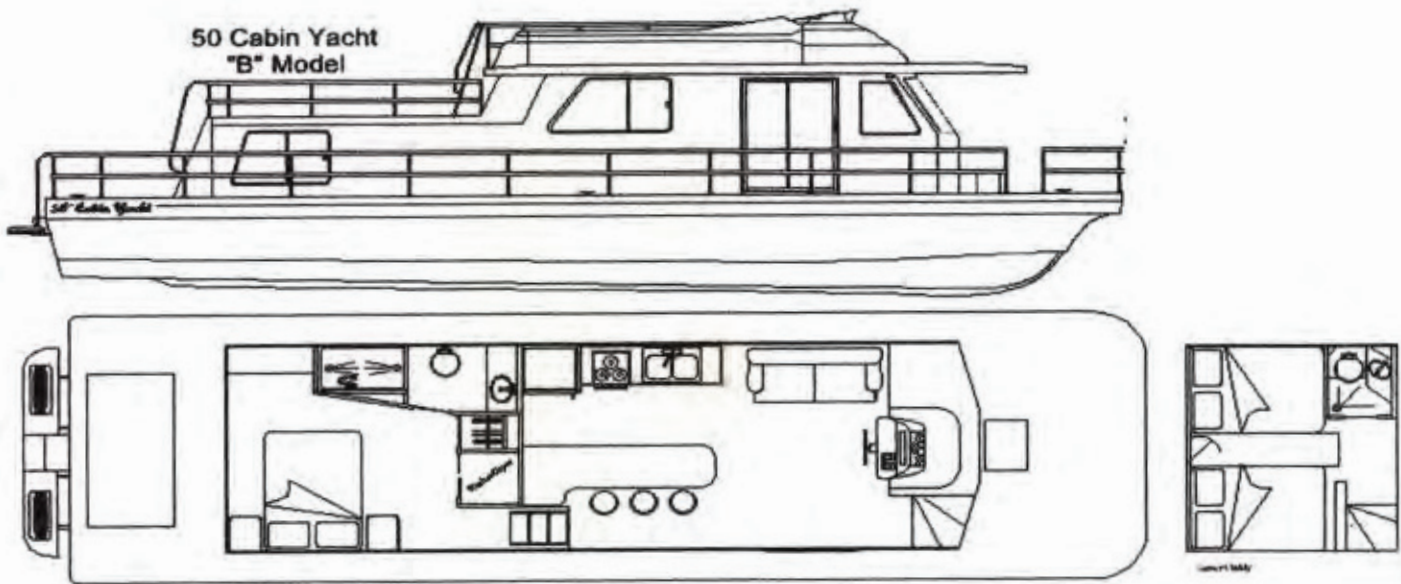
2018 MODEL YEAR

 44 Classic		605-231-1052 www.gibsonboats.com gibsonboatsd@hotmail.com	Verified before production By: _____ Date: _____
Date: _____		PLEASE REFER TO THIS NO. IN ALL CORRESPONDENCE RELATIVE TO THIS ORDER.	
44' CLASSIC - TWIN SCREW/V-DRIVE V-8 ENGINES		Optional TWIN SCREW/V-DRIVE Yanmar 315 Diesel Engines	
STANDARD EQUIPMENT			
Air Conditioner - Cruisair Reverse Cycle (2)	Rudder Indicator System/Dual Station		
Automatic Bilge Pump (2 - Forward & Engine Room)	Safety Chains - Main Deck		
Bath in Lower Stateroom w/Marine Head	Shades/Drapes		
Batteries (3)	Sliding Aft Door		
Battery Charger	Spotlight/Dual Station		
Bilge Blower (4)	Sunbrella Covers		
Captain's Chair Hi/Low	Swim Platform Fiberglass/Metal w/Ladder		
Carbon Monoxide Detector (3 Locations)	Synchronizer System/Dual Station		
Compass	Thermal Pane Windows		
Courtesy Light	Windshield Wiper (1)		
Deluxe Queen Bed			
Deluxe Stereo AM/FM CD			
Dual 50-amp Service		OPTIONAL EQUIPMENT	
Engine Hatch Assist Lift			
Extended Cornice w/Halogen Lighting	Additional Helm Chair Package		
Exterior Convenience Lighting	Helm Chair Pkg w/Vision-Air™ Seats		
Extra Fuel Capacity (240 Gal. Total)	Aft Hard Top		
Fire Extinguisher System (f.e. 241)	Bimini for Flybridge - 8ft		
Flooring - Choice of Berber or Plush Pile Carpet	Bimini for Flybridge - 12 ft		
Flybridge w/Seating	Bimini for Sundeck - 10 ft		
Flybridge Windshield	Bimini for Sundeck - 12 ft		
Fresh Water Cooling - Salt Water Pack	Central Vacuum System		
Generator 10.0 kw - Kohler - Low CO	Custom Drapes		
Head - Deluxe Design (1-Aft)	Engine Mufflers - Centek		
Head - Par Electric (1-Fwd)	Engine Mufflers - Daper		
Hour Meter (2)	Flybridge Stereo		
Hydraulic Steering	Flybridge Wetbar		
Icemaker for Upright Refrigerator	Forward Sheer w/Docking Lights, waterproof speakers & stereo control		
Insulated Walls	Inverter System - 3100 Watt		
Interior - Choice of Dark Maple or Light Maple	Laminate Hardwood Flooring		
Interior Furniture	Upgrade to AGM Deep Cycle Batteries		
Lower Stateroom with Twin Full-Size Beds	Water/Holding Tank Indicator		
Microwave/Built-In	Zincs		
Mood Lighting			
Overhead Console			
Phone/TV Installation (2 Locations)			
Power Monitor (2)	COLOR SELECTION:		
Pressurized Hot & Cold Water System	Exterior Trim Stripe:		
Privacy Door Aft	Carpet #	Captain's Chair #	
Range Electric w/Oven	Hide-A-Bed #	Dinette #	
Raw Water Strainer - Engine (2)	L/S Mattress #	Headboards #	
Raw Water Strainer - Generator	Bar Stools #	Drapes #	
Refrigerator	Bed Spread #	Shades	
	Bimini	Sunbrella	
*Optional Equipment & Accessories—Prices Apply Only When Included in Original Order—Prices Subject to Change Without Notice		THIS ORDER IS SUBJECT TO AVAILABILITY AND FINAL APPROVAL BY GIBSON BOATS, LLC, PORTLAND, TN. AN ACKNOWLEDGEMENT WILL BE SENT.	
		Please Advise Promptly if Incorrect	Dealer Signature

Gibson

2018 MODEL

50' Cabin Yacht B



Dimensional Specifications:

Length (Centerline).....	50'0"	15.24 M
Beam (Including Walkways).....	14'0"	4.27 M
Hull Depth:		
Forward.....	4'5"	1.37 M
Aft.....	4'0"	1.22 M
Draft.....	2'4"	.73 M
Walkways.....	1'6"	.49 M
Cabin Length.....	34'0"	10.36 M
Cabin Width.....	11'0"	3.35 M
Cabin Height.....	6'5"	1.98 M
Deck:		
Forward.....	9'0"	2.74 M
Aft.....	7'0"	2.13 M
Sundeck.....	13'4"	4.308 M
Overall Height.....	16'0"	4.88 M
Fuel Capacity.....	240 gals.	908.5 L
Water Capacity.....	120 gals.	454.25 L
Holding Capacity.....	100 gals.	378.54 L
Approximately 23,000 lbs	10432.62 Kg	


Crusader
E N G I N E S

KOHLER

ABYC
Setting Standards for Safer Boating

Design Compliance With NMMA, ABYC and
U.S. Coast Guard Safety Standards

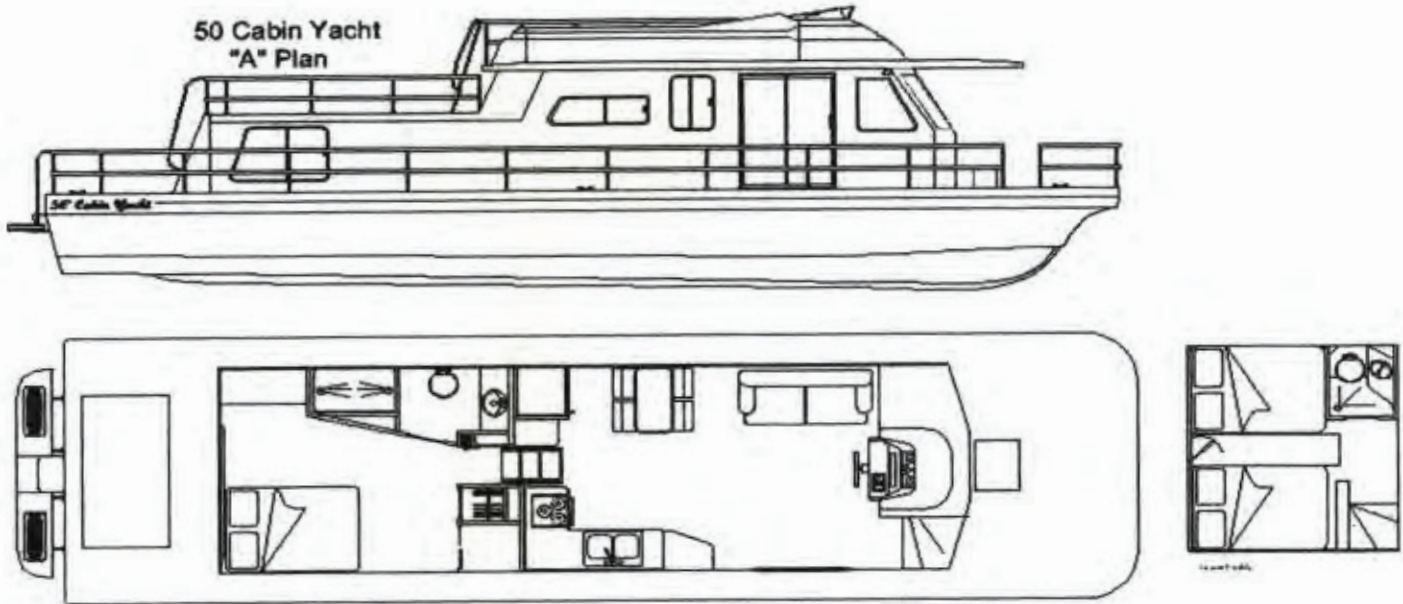
2018 MODEL YEAR

		605-231-1052 www.gibsonboats.com gibsonboatssd@hotmail.com	Verified before production By: _____ Date: _____
50 Cabin Yacht Plan B		PLEASE REFER TO THIS NO. IN ALL CORRESPONDENCE RELATIVE TO THIS ORDER	
Date: _____		B. P. O. _____	
S O L D T O		S H I P T O	
50' CABIN YACHT PLAN B - TWIN SCREW/V-DRIVE V-8 ENGINES			
Optional TWIN SCREW/V-DRIVE Yanmar 315 Diesel Engines			
STANDARD EQUIPMENT			
Air Conditioner - Cruisair Reverse Cycle (2)		Rudder Indicator System/Dual Station	
Automatic Bilge Pump (2 - Forward & Engine Room)		Safety Chains - Main Deck	
Bath in Lower Stateroom w/Marine Head		Shades/Drapes	
Batteries (3)		Sliding Aft Door	
Battery Charger		Spotlight/Dual Station	
Bilge Blower (4)		Sunbrella Covers	
Captain's Chair Hi/Low		Swim Platform Fiberglass/Metal w/Ladder	
Carbon Monoxide Detector (3 Locations)		Synchronizer System/Dual Station	
Compass		Thermal Pane Windows	
Courtesy Light		Washer/Dryer	
Deluxe Queen Bed		Windshield Wiper (1)	
Deluxe Stereo AM/FM CD			
Dual 50-amp Service		OPTIONAL EQUIPMENT	
Engine Hatch Assist Lift		Additional Helm Chair Package	
Extended Comica w/Halogen Lighting		Helm Chair Pkg w/Vision-Air™ Seats	
Exterior Convenience Lighting		Aft Hard Top	
Extra Fuel Capacity (240 Gal. Total)		Bimini for Flybridge - 8ft	
Fire Extinguisher System (f.e. 241)		Bimini for Flybridge - 12 ft	
Flooring - Choice of Berber or Plush Pile Carpet		Bimini for Sundeck - 10 ft	
Flybridge w/Seating		Bimini for Sundeck - 12 ft	
Flybridge Windshield		Central Vacuum System	
Fresh Water Cooling - Salt Water Pack		Custom Drapes	
Generator 10.0 kw - Kohler - Low CO		Dishwasher	
Head - Deluxe Design (1-Aft)		Engine Mufflers - Centek	
Head - Par Electric (1-Fwd)		Engine Mufflers - Daper	
Hour Meter (2)		Flybridge Stereo	
Hydraulic Steering		Flybridge Wetbar	
Icemaker for Upright Refrigerator		Forward Sheer w/Docking Lights, waterproof speakers & stereo control	
Insulated Walls		Inverter System - 3100 Watt	
Interior - Choice of Dark Maple or Light Maple		Laminate Hardwood Flooring	
Interior Furniture		Upgrade to AGM Deep Cycle Batteries	
Lower Stateroom with Twin Full-Size Beds		Water/Holding Tank Indicator	
Microwave/Built-In		Zincs	
Mood Lighting			
Overhead Console			
Phone/TV Installation (1 Location)		COLOR SELECTION:	
Power Monitor (2)		Exterior Trim Stripe:	
Pressurized Hot & Cold Water System		Carpet #	Captain's Chair #
Privacy Door Aft		Hide-A-Bed #	Dinette #
Range Electric w/Oven		L/S Mattress #	Headboards #
Raw Water Strainer - Engine (2)		Bar Stools #	Drapes #
Raw Water Strainer - Generator		Bed Spread #	Shades
Refrigerator		Bimini	Sunbrella
*Optional Equipment & Accessories—Prices Apply Only When Included in Original Order—Prices Subject to Change Without Notice		THIS ORDER IS SUBJECT TO AVAILABILITY AND FINAL APPROVAL BY GIBSON BOATS, LLC, PORTLAND, TN. AN ACKNOWLEDGEMENT WILL BE SENT	
		Please Advise Promptly if Incorrect	Dealer Signature

Gibson

2018 MODEL

50' Cabin Yacht A



Dimensional Specifications:

Length (Centerline).....	50'0"	15.24 M
Beam (Including Walkways).....	14'0"	4.27 M
Hull Depth:		
Forward.....	4'5"	1.37 M
Aft.....	4'0"	1.22 M
Draft.....	2'4"	.73 M
Walkways.....	1'6"	.49 M
Cabin Length.....	34'0"	10.36 M
Cabin Width.....	11'0"	3.35 M
Cabin Height.....	6'5"	1.98 M
Deck:		
Forward.....	9'0"	2.74 M
Aft.....	7'0"	2.13 M
Sundeck.....	13'4"	4.308 M
Overall Height.....	16'0"	4.88 M
Fuel Capacity.....	240 gals.	908.5 L
Water Capacity.....	120 gals.	454.25 L
Holding Capacity.....	100 gals.	378.54 L
Approximately 23,000 lbs	10432.62 Kg	



Crusader
 ENGINES

KOHLER

ABYC
 Setting Standards for Safer Boating

Design Compliance With NMMA, ABYC and
 U.S. Coast Guard Safety Standards

2018 MODEL YEAR

		605-231-1052 www.gibsonboats.com gibsonboatssd@hotmail.com	Verified before production By: _____ Date: _____
50 Cabin Yacht Plan A		PLEASE REFER TO THIS NO. IN ALL CORRESPONDENCE RELATIVE TO THIS ORDER	B. P. O.
Date:			
B O L D T O		S H I P T O	
50' CABIN YACHT PLAN A - TWIN SCREW/V-DRIVE V-8 ENGINES			
Optional TWIN SCREW/V-DRIVE Yanmar 315 Diesel Engines			
STANDARD EQUIPMENT			
Air Conditioner - Cruisair Reverse Cycle (2)		Rudder Indicator System/Dual Station	
Automatic Bilge Pump (2 - Forward & Engine Room)		Safety Chains - Main Deck	
Bath in Lower Stateroom w/Marine Head		Shades/Drapes	
Batteries (3)		Sliding Aft Door	
Battery Charger		Spotlight/Dual Station	
Bilge Blower (4)		Sunbrella Covers	
Captain's Chair Hi/Low		Swim Platform Fiberglass/Metal w/Ladder	
Carbon Monoxide Detector (3 Locations)		Synchronizer System/Dual Station	
Compass		Thermal Pane Windows	
Courtesy Light		Washer/Dryer	
Deluxe Queen Bed		Windshield Wiper (1)	
Deluxe Stereo AM/FM CD			
Dual 50-amp Service		OPTIONAL EQUIPMENT	
Engine Hatch Assist Lift			
Extended Cornice w/Halogen Lighting		Additional Helm Chair Package	
Exterior Convenience Lighting		Helm Chair Pkg w/Vision-Air™ Seats	
Extra Fuel Capacity (240 Gal. Total)		Aft Hard Top	
Fire Extinguisher System (f.e. 241)		Bimini for Flybridge - 8ft	
Flooring - Choice of Berber or Plush Pile Carpet		Bimini for Flybridge - 12 ft	
Flybridge w/Seating		Bimini for Sundeck - 10 ft	
Flybridge Windshield		Bimini for Sundeck - 12 ft	
Fresh Water Cooling - Salt Water Pack		Central Vacuum System	
Generator 10.0 kw - Kohler - Low CO		Custom Drapes	
Head - Deluxe Design (1-Aft)		Engine Mufflers - Centek	
Head - Par Electric (1-Fwd)		Engine Mufflers - Daper	
Hour Meter (2)		Flybridge Stereo	
Hydraulic Steering		Flybridge Wetbar	
Icemaker for Upright Refrigerator		Forward Sheer w/Docking Lights, waterproof speakers & stereo control	
Insulated Walls		Inverter System - 3100 Watt	
Interior - Choice of Dark Maple or Light Maple		Laminate Hardwood Flooring	
Interior Furniture		Upgrade to AGM Deep Cycle Batteries	
Lower Stateroom with Twin Full-Size Beds		Water/Holding Tank Indicator	
Microwave/Built-In		Zincs	
Mood Lighting			
Overhead Console			
Phone/TV Installation (1 Location)		COLOR SELECTION:	
Power Monitor (2)		Exterior Trim Stripe:	
Pressurized Hot & Cold Water System		Carpet #	Captain's Chair #
Privacy Door Aft		Hide-A-Bed #	Dinette #
Range Electric w/Oven		L/S Mattress #	Headboards #
Raw Water Strainer - Engine (2)		Bar Stools #	Drapes #
Raw Water Strainer - Generator		Bed Spread #	Shades
Refrigerator		Bimini	Sunbrella
*Optional Equipment & Accessories--Prices Apply Only When Included in Original Order--Prices Subject to Change Without Notice		THIS ORDER IS SUBJECT TO AVAILABILITY AND FINAL APPROVAL BY GIBSON BOATS, LLC, PORTLAND, TN. AN ACKNOWLEDGEMENT WILL BE SENT	
		Please Advise Promptly if Incorrect	Dealer Signature